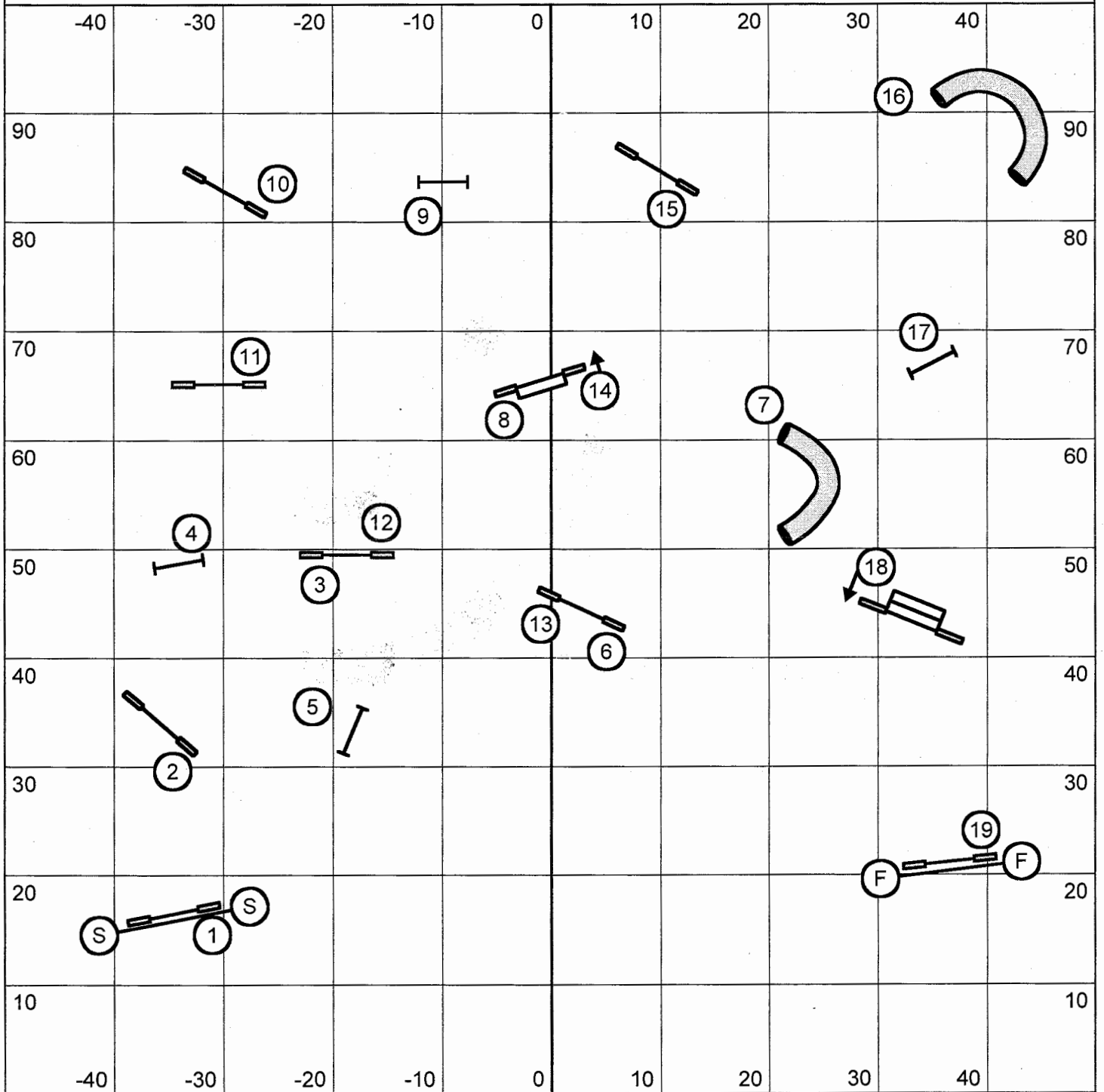
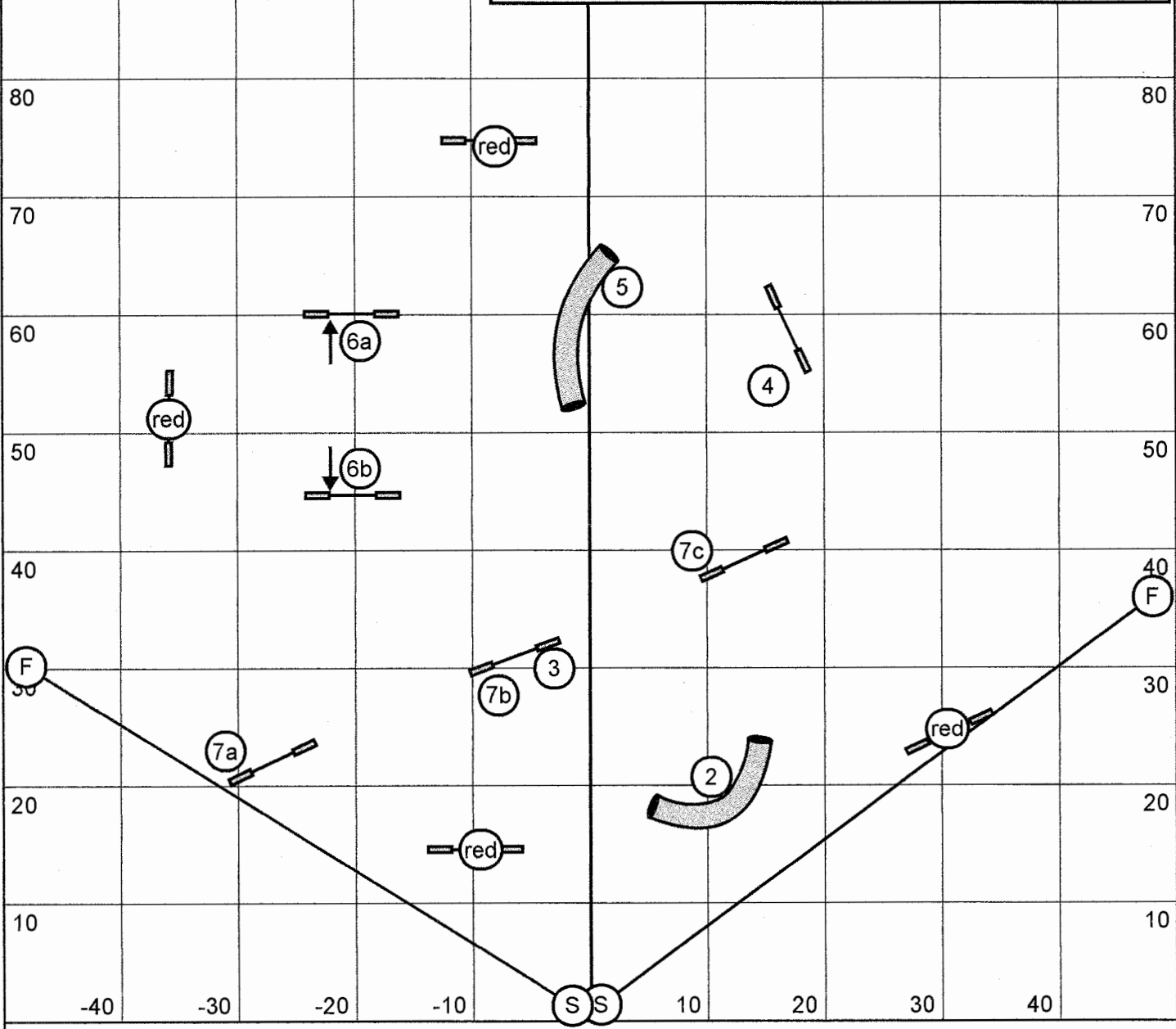


Masters/P/III/Veterans Jumpers, Salinas-Monterey Agility Racing Team  
 Saturday, August 25, 2012  
 Peggy Hammond



Secretary

M/P3 Snooker Smart Aug 25 2012 L Sigman	-30	-20	-10	Times;					
				Champ dogs		Perf dogs		Vets	
				22/26"	48 sec	16/22"	50 sec	12/16"	52 sec
				16"	49 sec	12"	51 sec	8"	53 sec
			12"	50 sec	8"	52 sec	4"	54 sec	

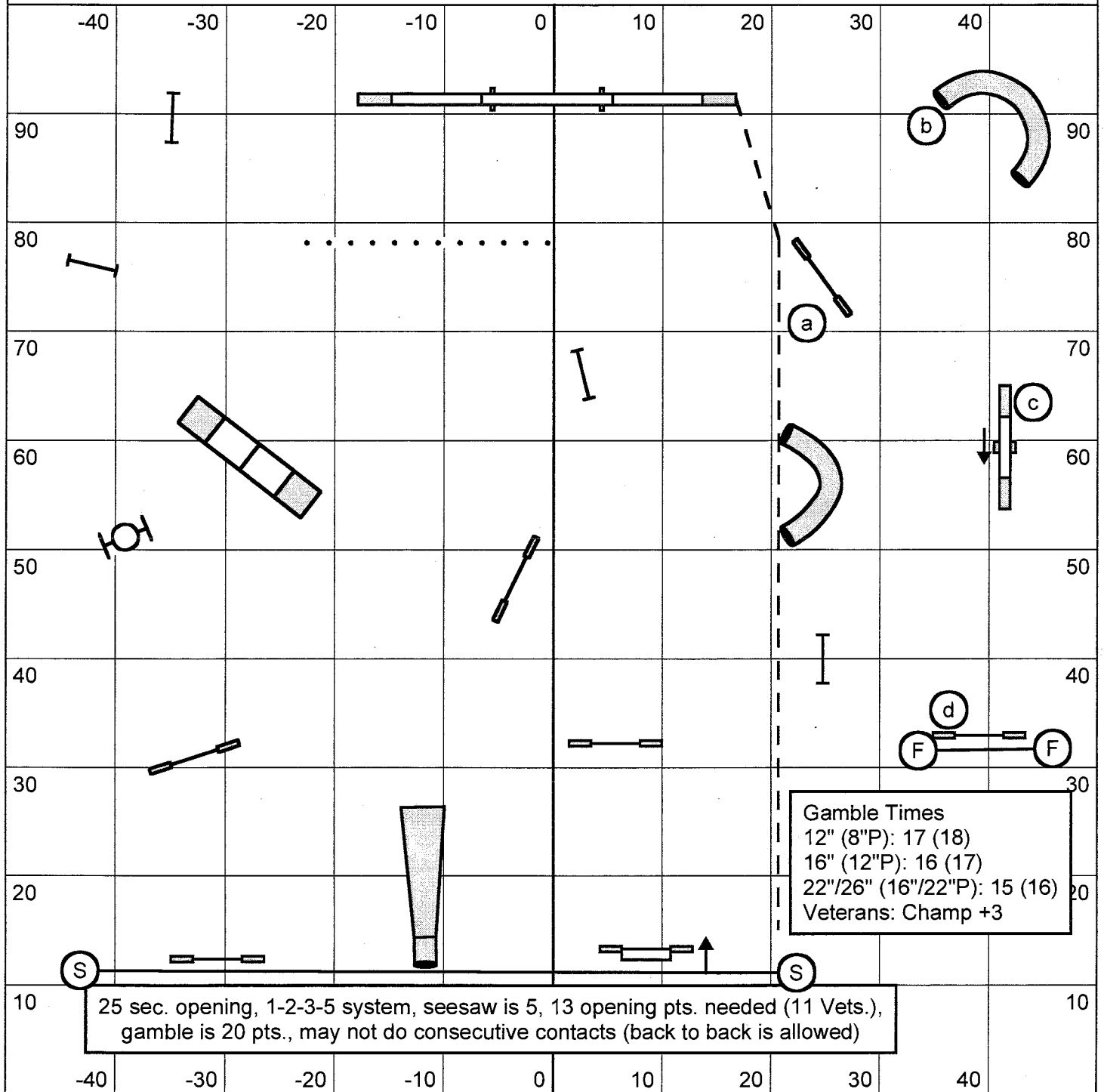


There are 4 reds on course. You may attempt 3 or 4 reds.

In the opening, 2-5 are bi-directional. #6 may be taken starting with either jump, but each jump must be performed in the direction indicated. #7 may be taken in any direction, in any order.

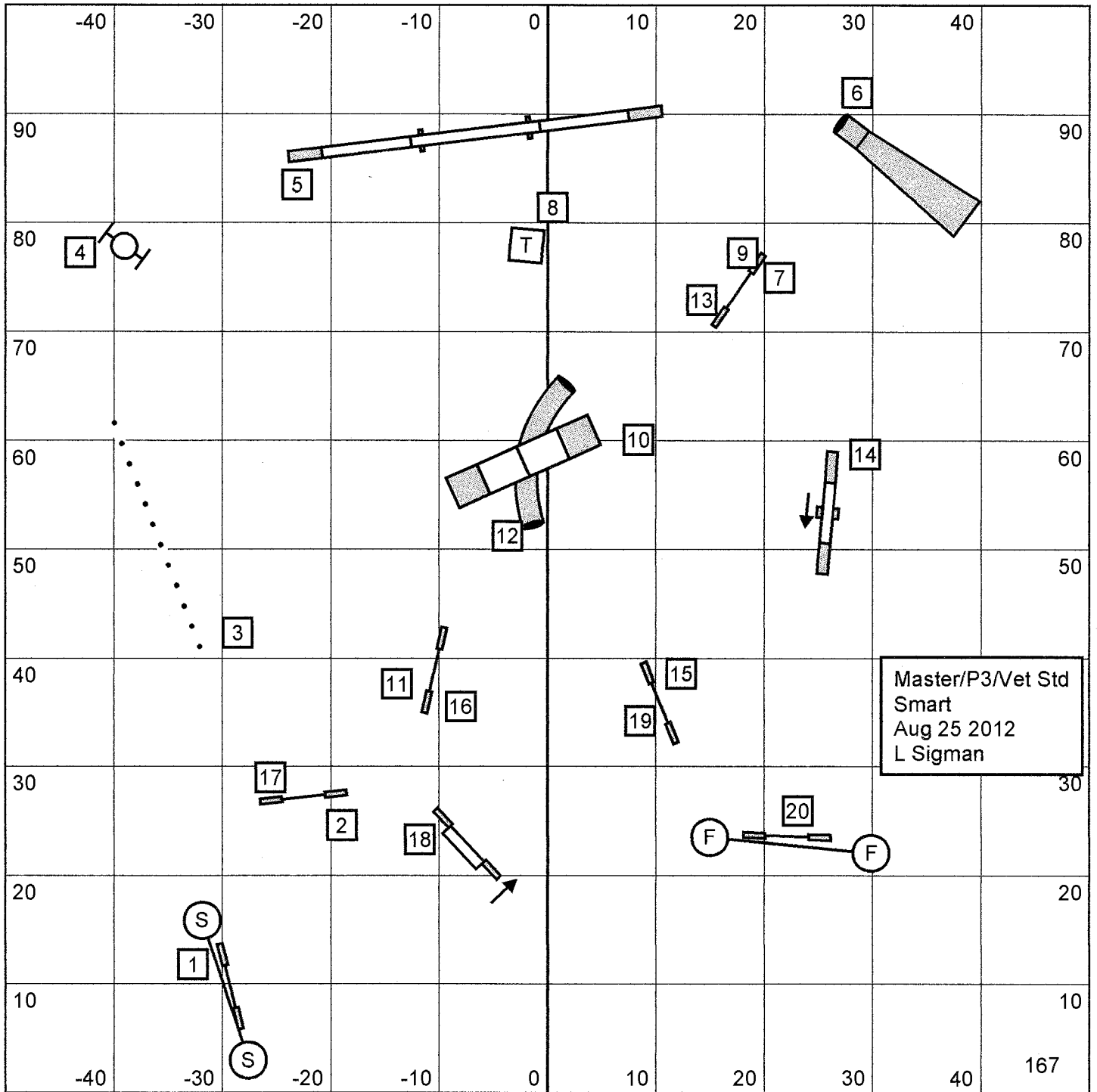
In the close, #2 is still bi-directional. All others must be taken as indicated.

Masters/PIII/Veterans Gamblers, Salinas-Monterey Agility Racing Team  
 Saturday, August 25, 2012  
 Peggy Hammond



Gamble Times  
 12" (8"P): 17 (18)  
 16" (12"P): 16 (17)  
 22"/26" (16"/22"P): 15 (16)  
 Veterans: Champ +3

25 sec. opening, 1-2-3-5 system, seesaw is 5, 13 opening pts. needed (11 Vets.), gamble is 20 pts., may not do consecutive contacts (back to back is allowed)

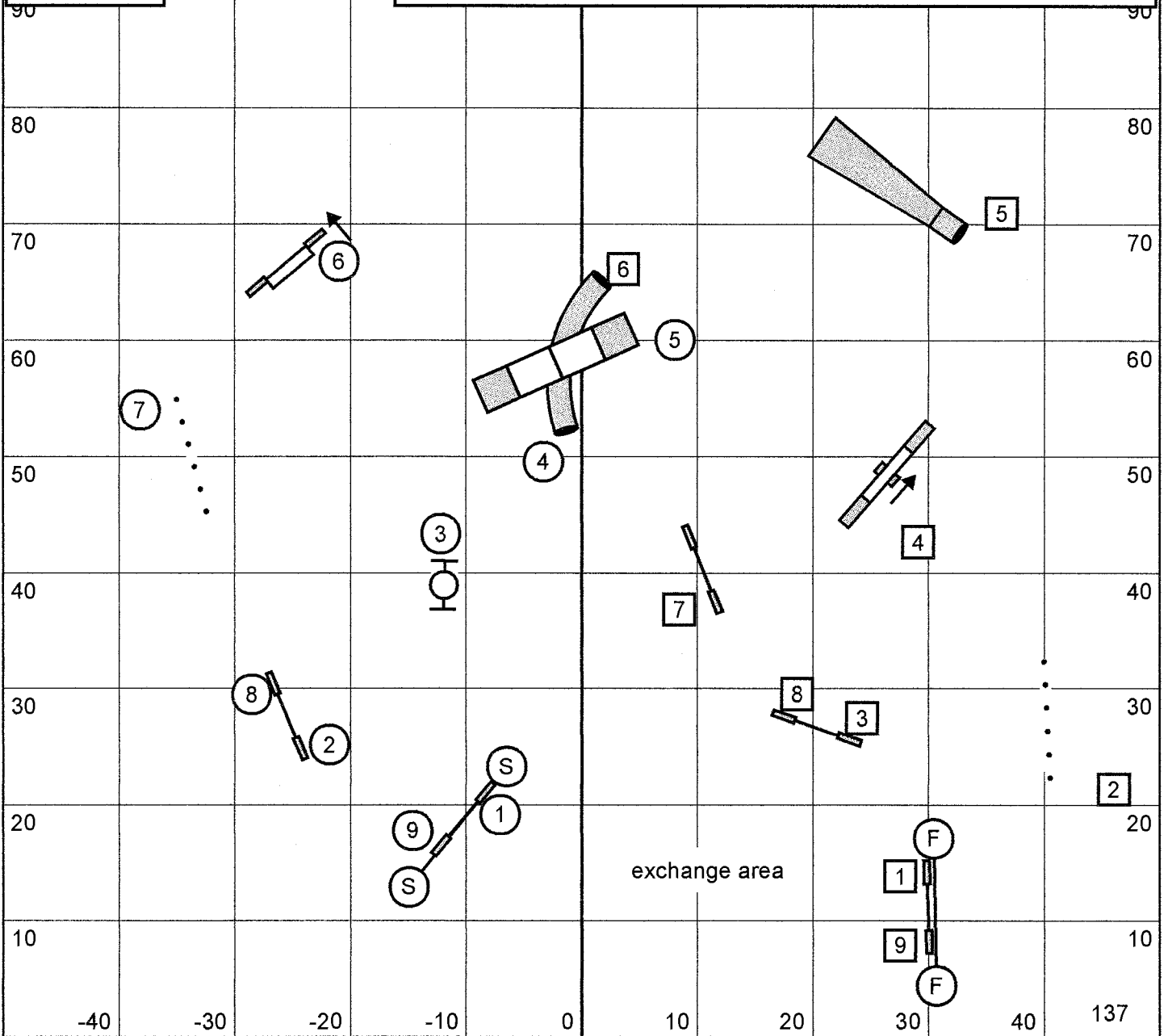


M/P3 Relay  
 Smart  
 Aug 25 2012  
 L Sigman

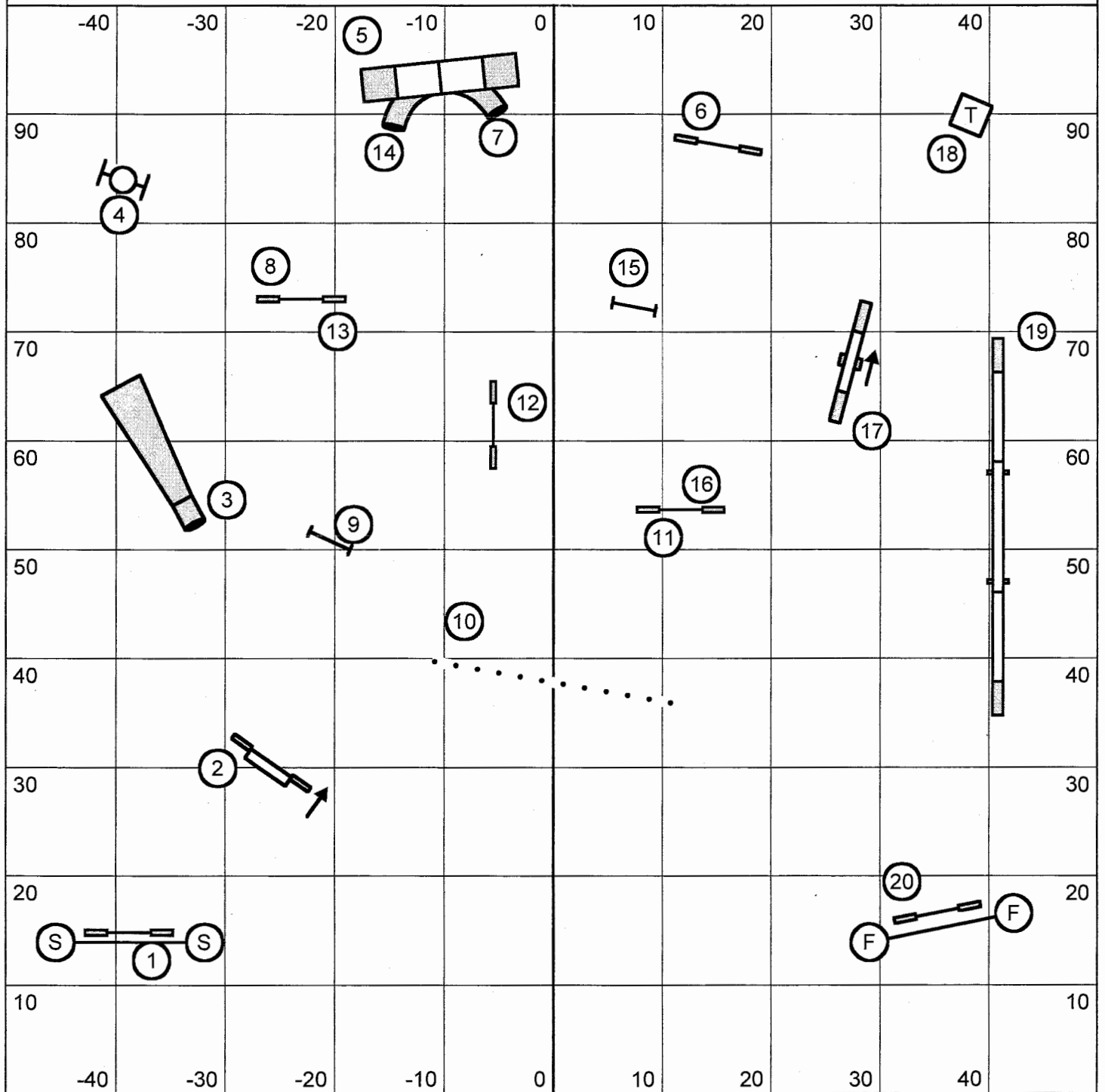
-30

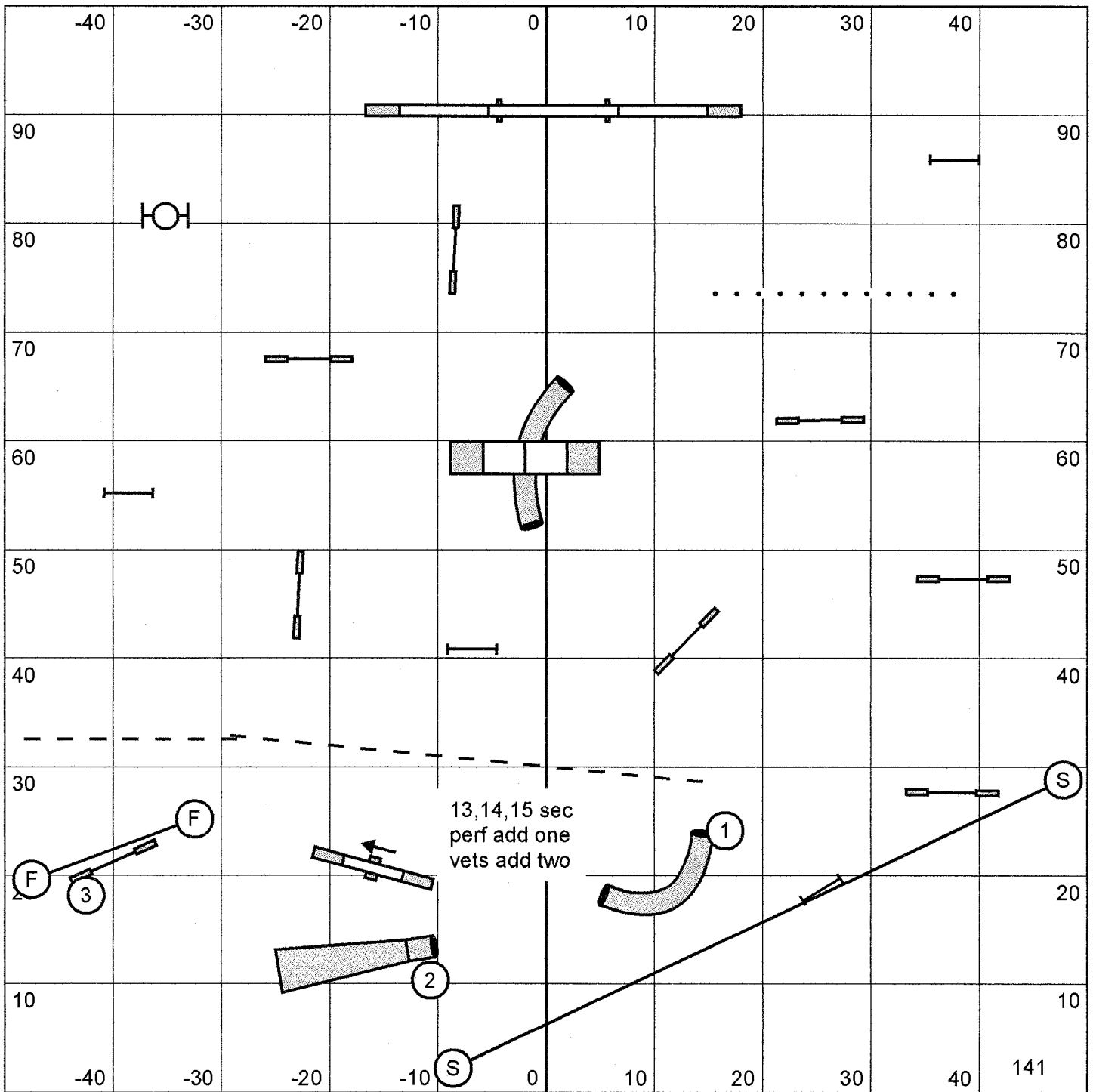
-20

1st dog runs circles  
 2nd dog runs squares  
 mixed heights may choose sides  
 PLEASE FIND YOUR PARTNER AND CHECK IN BEFORE WALKING!



Masters/P/III/Veterans Standard, Salinas-Monterey Agility Racing Team  
 Sunday, August 26, 2012  
 Peggy Hammond





M/P3/Vet Gamblers  
Smart  
Aug 25 2012  
L Sigman

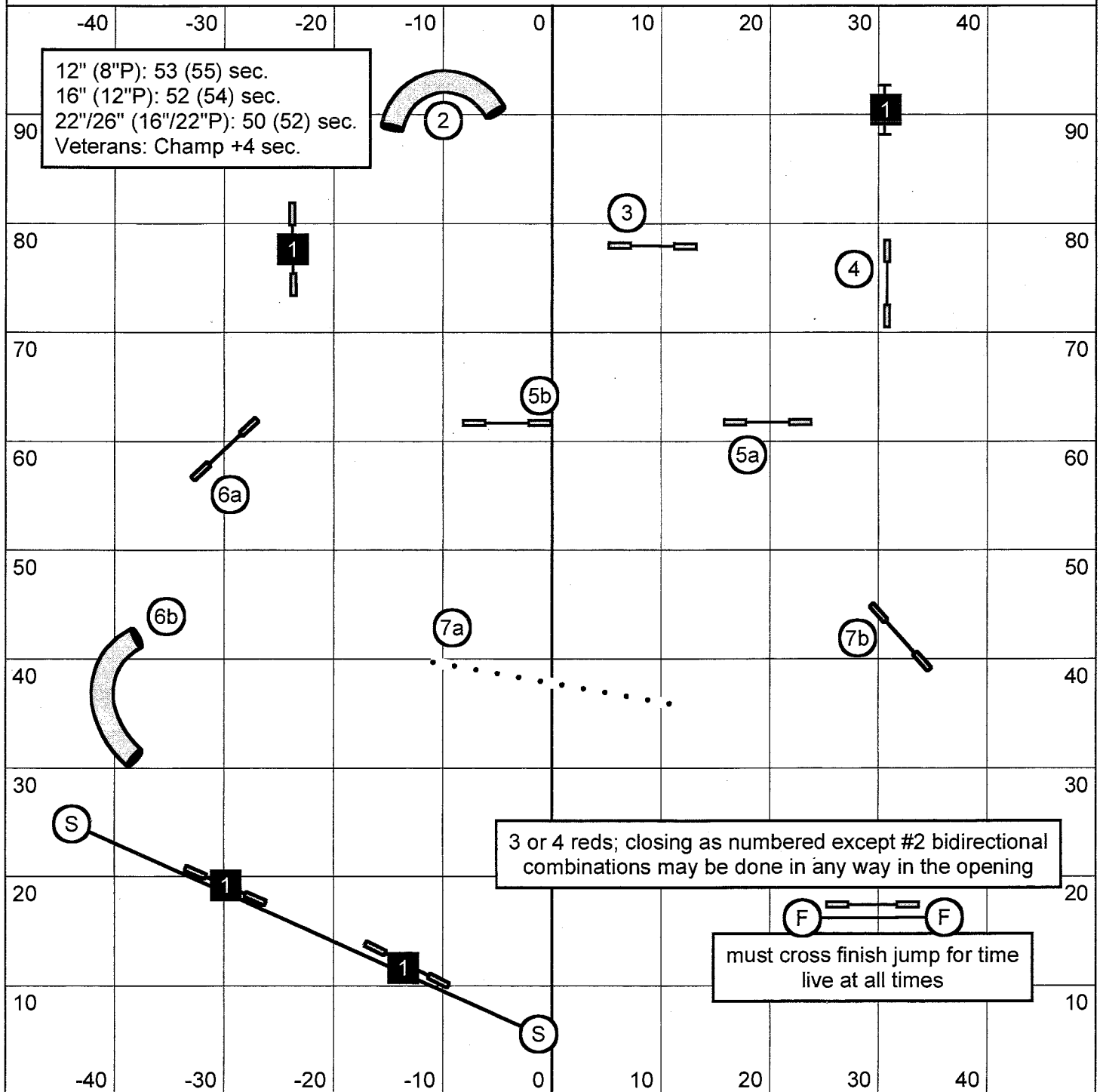
1235 system  
weaves are 5

25 sec opening  
you need 13 opening points  
(vets need 11)

back-to-back OK  
contact-to-contact OK

141

Masters/PIII/Veterans Snooker, Salinas-Monterey Agility Racing Team  
 Sunday, August 26, 2012  
 Peggy Hammond





M/P3/Vet Jumpers  
 Smart  
 Aug 25 2012  
 L Sigman

