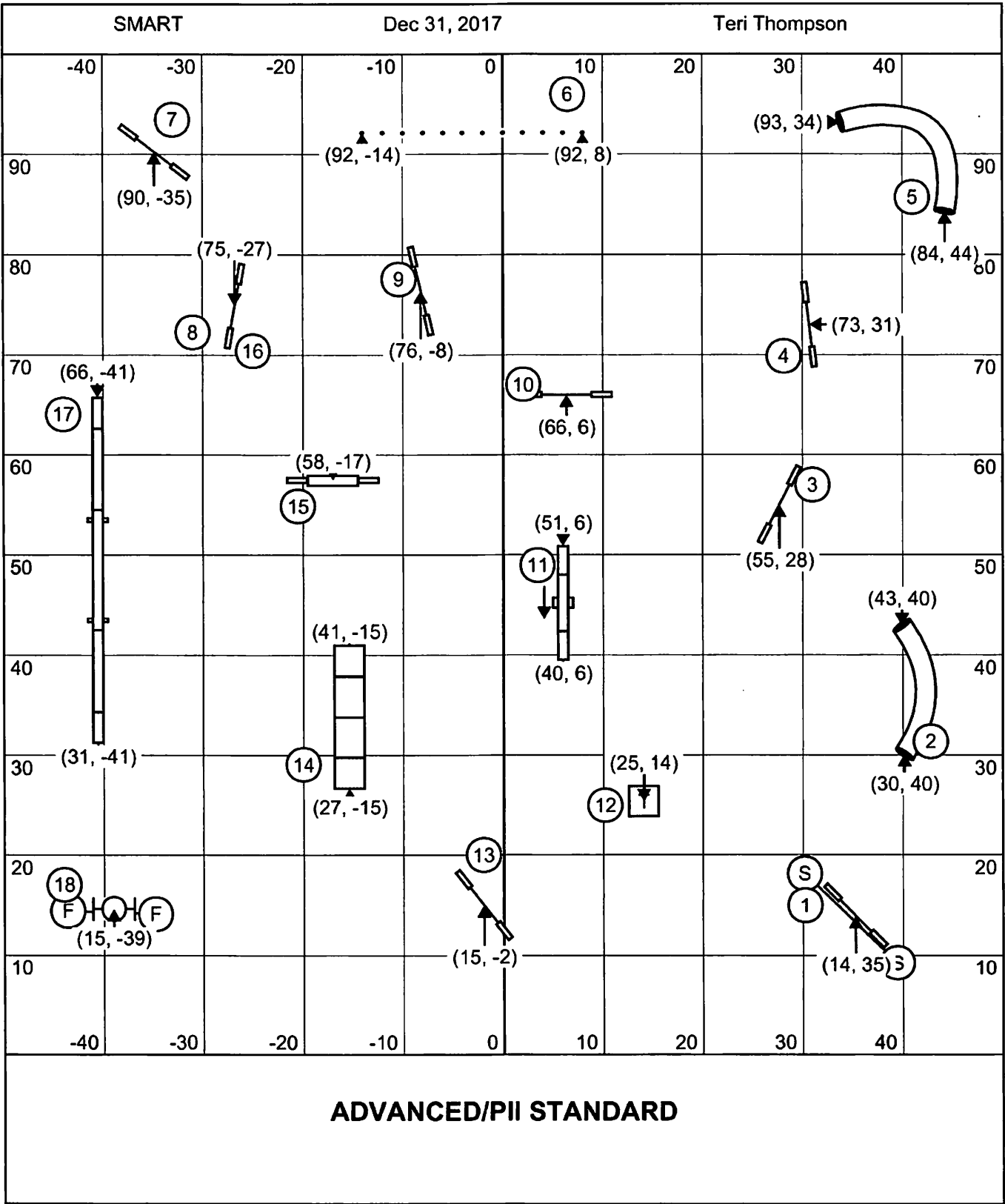


ADVANCED/PII GAMBLERS

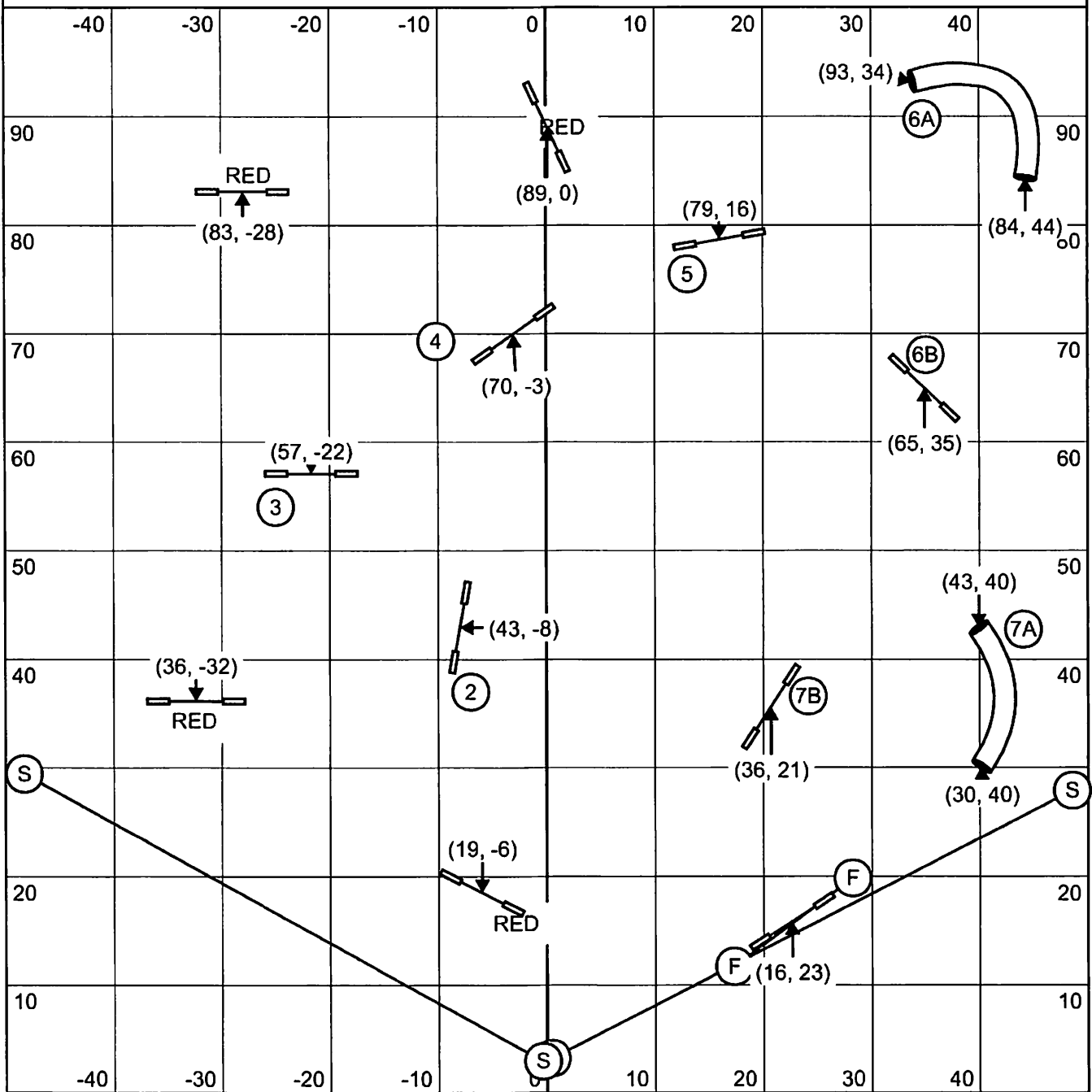
25 Sec. Opening
 1-3-5-7 Point System
 Teeter 7 points
 Back to Back OK. No Contact to Contact
 18 points needed in the opening.
 Joker Times: 10/12"=17sec, 14/16"=16sec, 20/22/24"=15sec. Perf. add 1 sec.



SMART

Dec 31, 2017

Teri Thompson



ADVANCED/PII SNOOKER

4 OF 4 REDS Must be attempted

37 Points needed for a Q

Combo #6 & #7 can be taken any direction in the opening for points. If a bar drops in the opening combo complete the combo for 0 points.

#2 is Bi-Directional in the closing. All other numbers must be taken as marked in the closing.

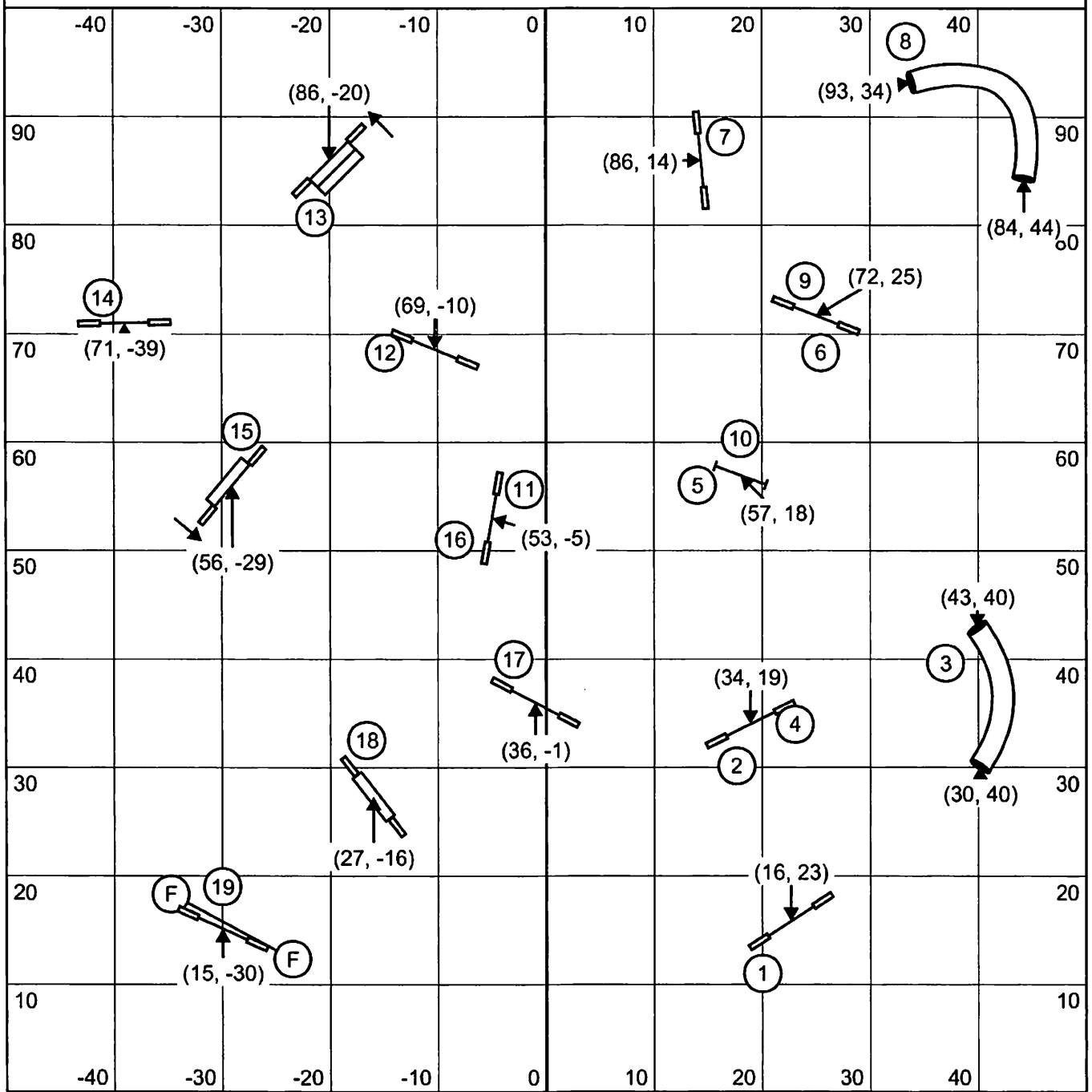
Must take Finish jump to get a time. Finish jump is live at all times!

10/12"=54sec 14/16"=52sec 20/22/24"=50sec. Perf add 1 sec

SMART

Dec 31, 2017

Teri Thompson



ADVANCED/PII JUMPERS